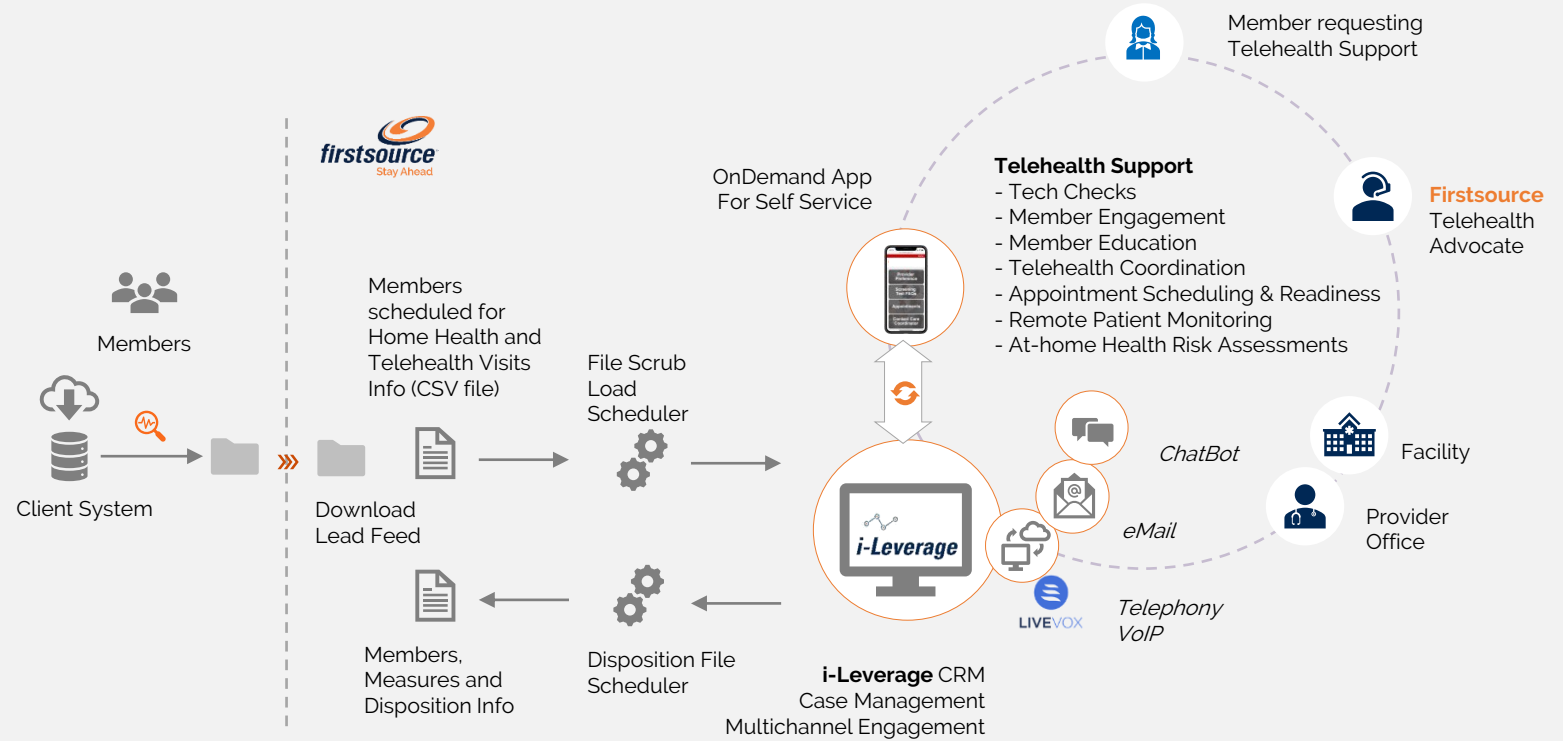


Telehealth Support

Overview

Firstsource offers end to end telehealth support services, enabling healthcare payers and providers to reduce cost and improve patient outcome. We provide first-line technical set-up, knowledgeable agents and ongoing support to reduce the risk and complexity of establishing and maintaining a robust and reliable telehealth architecture.



Capabilities

TECHNICAL AND NEW USER START-UP

REMOTE DIAGNOSTICS VIA DEVICE MONITORING

VIRTUAL VISIT CONFIRMATION AND RESCHEDULING

VIRTUAL PATIENT COACHING

ESCALATION OF PATIENT INTERACTIONS TO CLINICIANS